

Installation of the 1005-306-59 Embedded Front Rail (EFR) For use with the A/N PVS-22 and similar systems

This work must be performed by an Armorer or Gunsmith familiar with these type of rifles.

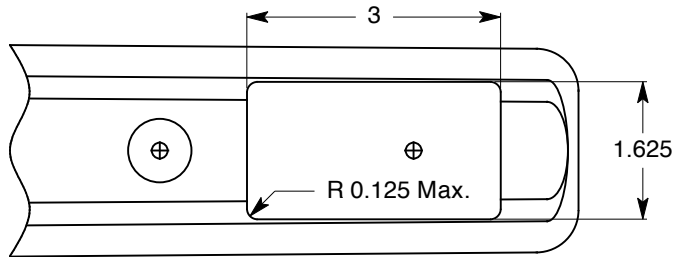


fig.1

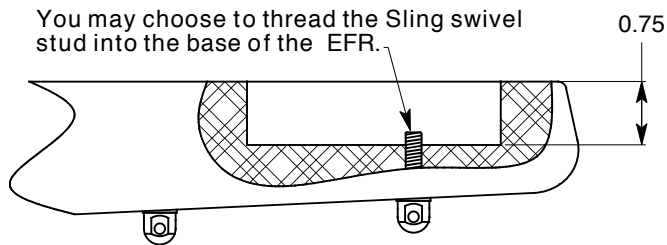


fig.2

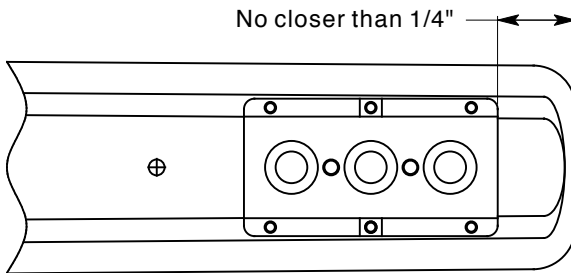


fig.3

1. Using a 1/4" dia. End mill or smaller, Mill a rectangular pocket in the forearm of the stock that corresponds with the dimensions in Figures 1&2.
2. Check fit, insert lower half of the EFR and then install barreled action, mount top of EFR. Check for clearance all around the barrel.
3. You may need to adjust the inlet for the action so that the barrel is centered on the EFR.
4. After fitting, bed the lower half of the rail into the stock with Marine-Tex (recommended). You may choose to thread a sling swivel stud into the mount, do this now. Allow the adhesive to fill the tops of the 3 counter bores in the mount's bottom.
5. Make certain that the 6 screw holes on the top of the mount are clear from adhesive, clean all excess adhesive before it sets.
6. When the adhesive has set, install barreled action and top of EFR mount.
7. Mount the side accessory rail as needed.

